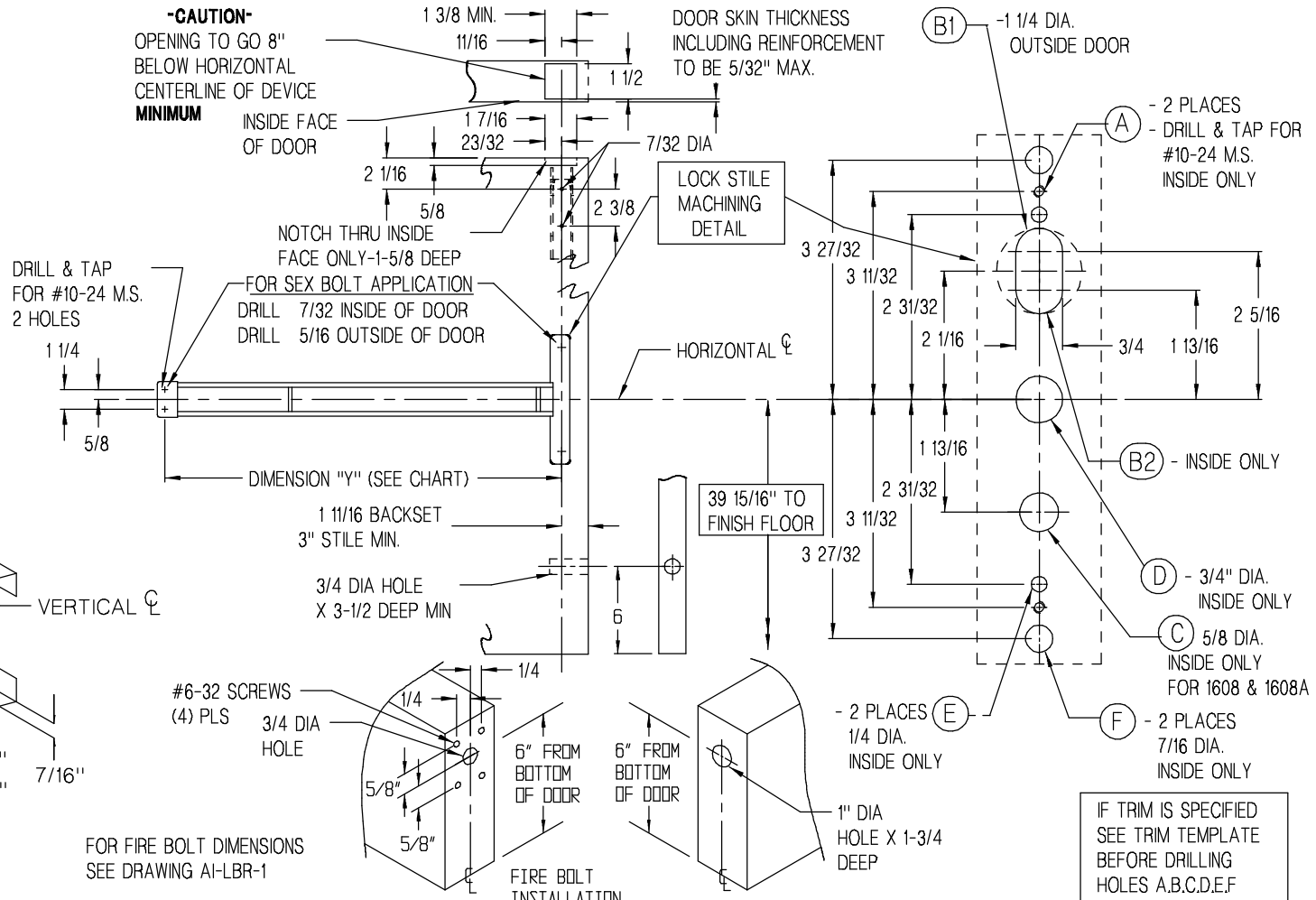


-CAUTION-
OPENING TO GO 8"
BELOW HORIZONTAL
CENTERLINE OF DEVICE
MINIMUM



FL-1600 FIRE EXIT DEVICE INSTALLATION
PROVIDE ADEQUATE REINFORCEMENT FOR METAL COVERED COMPOSITE AND HOLLOW METAL DOORS FOR THE DRILLING AND TAPPING FOR MACHINE SCREWS. PLASTIC AND WOOD COVERED COMPOSITE OR METAL COVERED COMPOSITE AND HOLLOW METAL FIRE DOORS WITHOUT REINFORCEMENT, SEX BOLTS ARE REQUIRED.

HOLE DRILLING SCHEDULE	
DEVICE	"B1" & "B2"
1601	NO
1602	NO
1603 x LESS TRIM	YES
1603 (29 TRIM)	SEE TRIM TEMPLATE AL-T29-3
1608,1608A (29 TRIM)	SEE TRIM TEMPLATE AL-T29-8

DEVICE ILLUSTRATED IS RIGHT HAND REVERSE BEVEL.
FOR LEFT HAND REVERSE BEVEL, REVERSE STILE MACHINING

DOOR OPENING WIDTH	DIM "Y"
2'-6"	26 3/8"
2'-8"	28 3/8"
3'-0"	32 3/8"
3'-4"	36 3/8"
3'-6"	38 3/8"
3'-8"	40 3/8"
4'-0"	44 3/8"

PRECISION HARDWARE INC.
P.O. BOX 74040 ROMULUS MI. 48174-0040

DEVICE SERIES
1600-LBR, FL-1600-LBR

TEMPLATE NO. HM-1600-LBR-D	REV	RELEASE DATE 01-09-03
--------------------------------------	-----	---------------------------------