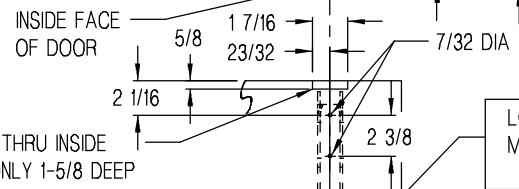
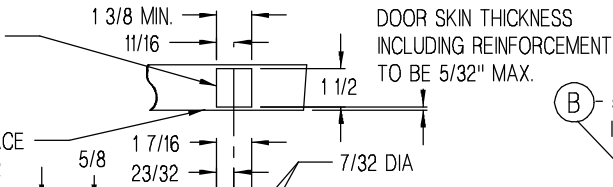


**-CAUTION-**  
OPENING TO GO 8"  
BELOW HORIZONTAL  
CENTERLINE OF DEVICE  
**MINIMUM**



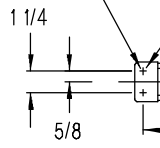
- (A) - 4 PLACES  
- DRILL & TAP FOR  
#10-24 M.S.  
INSIDE ONLY
- (B) - 5/8 DIA.  
INSIDE ONLY

DRILL & TAP  
FOR #10-24 M.S.  
2 PLACES

NOTCH THRU INSIDE  
FACE ONLY 1-5/8 DEEP  
FOR SEX BOLT APPLICATION  
DRILL 7/32 INSIDE OF DOOR  
DRILL 5/16 OUTSIDE OF DOOR

LOCK STILE  
MACHINING  
DETAIL

TOP STRIKE FRAME  
MACHINING  
DETAIL

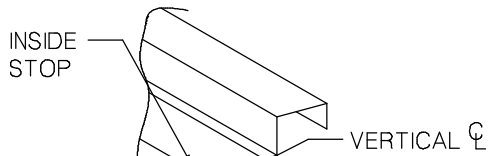


HORIZONTAL  $\phi$

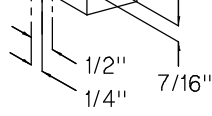
DIMENSION "Y" (SEE CHART)

39 15/16" TO  
FINISH FLOOR

VERTICAL  $\phi$  2 3/4 OR  
CENTERED ON  
EXPOSED LOCKSTILE

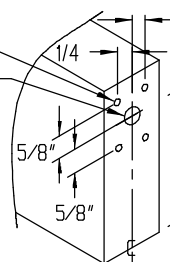


DRILL & TAP FOR  
#10-24 SCREWS



#6-32 SCREWS  
(4) PLS  
3/4 DIA  
HOLE

3/4 DIA HOLE  
X 3-1/2 DEEP MIN.



FIRE BOLT  
INSTALLATION  
FOR FIRE RATED  
DEVICES ONLY

FOR FIRE BOLT DIMENSIONS  
SEE DRAWING AI-LBR-1

1" DIA  
HOLE X 1-3/4  
DEEP

- (C) INSIDE ON ALL  
DEVICES
- (E) - 4 PLACES  
1/4 DIA.  
INSIDE ONLY
- (F) - 2 PLACES 7/16  
DIA. INSIDE ONLY

IF TRIM IS SPECIFIED  
SEE TRIM TEMPLATE  
BEFORE DRILLING  
HOLES A,B,C,D,E,F

**FL-1800 FIRE EXIT DEVICE INSTALLATION**  
PROVIDE ADEQUATE REINFORCEMENT FOR METAL  
COVERED COMPOSITE AND HOLLOW METAL DOORS FOR  
THE DRILLING AND TAPPING FOR MACHINE SCREWS.  
PLASTIC AND WOOD COVERED COMPOSITE OR METAL  
COVERED COMPOSITE AND HOLLOW METAL FIRE DOORS  
WITHOUT REINFORCEMENT, SEX BOLTS ARE REQUIRED.

HOLE DRILLING SCHEDULE	
DEVICE	HOLE "B"
1801	NO
1802	NO
1803	YES
1805	YES
1808	YES
1805A	NO
1808A	NO

DEVICE ILLUSTRATED IS  
RIGHT HAND REVERSE BEVEL  
  
FOR LEFT HAND REVERSE BEVEL,  
REVERSE STILE MACHINING

DOOR OPENING WIDTH	DIM. "Y"
2' 6"	25"
2' 8"	27"
3' 0"	31"
3' 4"	35"
3' 6"	37"
3' 8"	39"
4' 0"	43"

**PRECISION HARDWARE INC.**  
P.O. BOX 74040 ROMULUS MI. 48174-0040  
DEVICE SERIES  
**1800-LBR, FL-1800-LBR**  
TEMPLATE NO. REV RELEASE DATE  
**HM-1800-LBR-D 01-09-03**