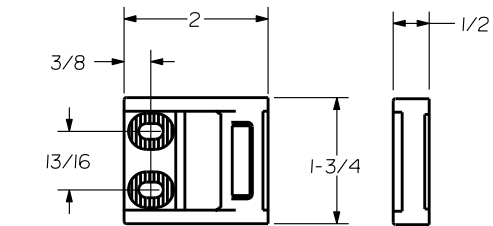
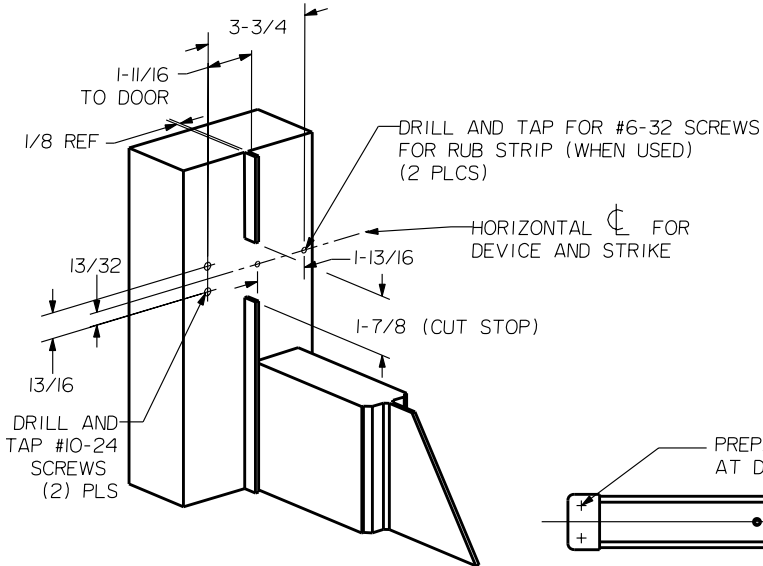
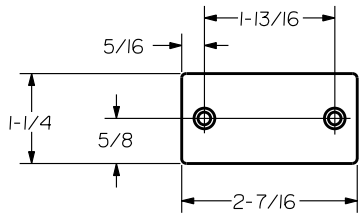


**SEX BOLT MACHINING**  
 DRILL 1/4 DIA. INSIDE  
 DRILL 5/16 DIA. OUTSIDE

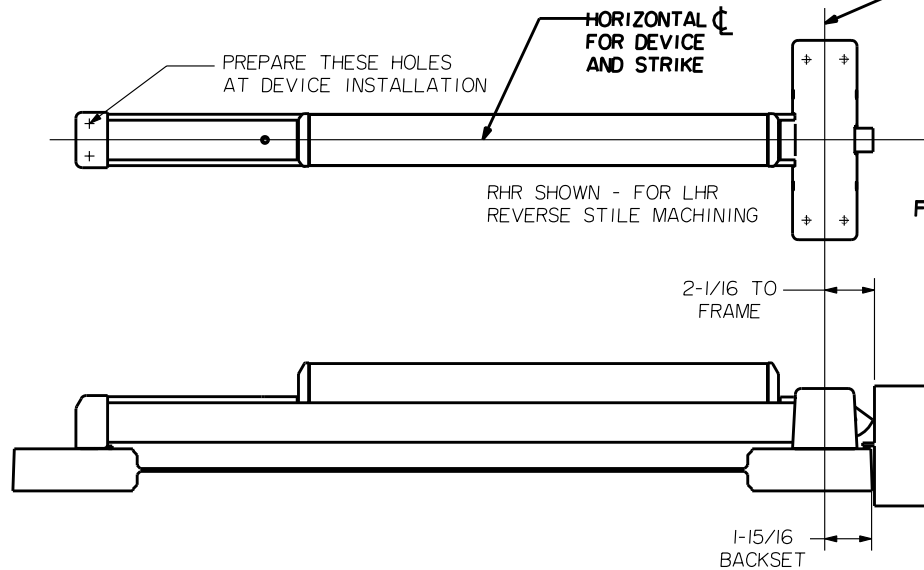
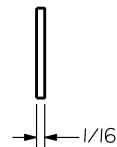
NOTE: "LETTER" AT END OF TRIM MODEL NO.  
 DESIGNATES GRIP STYLE. EXCEPT AS NOTED,  
 GRIP STYLE HAS NO EFFECT ON STILE MACHINING.



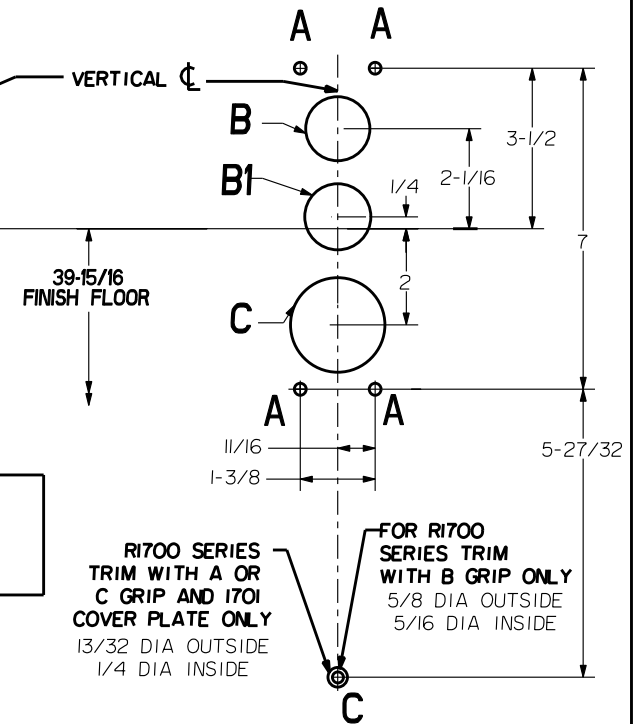
ROLLER STRIKE S988  
(STANDARD)



RUB STRIP S454  
(STANDARD)



**LOCK STILE MACHINING**



HOLE (4) PLS <b>A</b>	DEVICES	TRIMS	HOLE <b>B</b> OR <b>B1</b>	HOLE <b>C</b>
#10-24 TAP INSIDE ONLY	<b>21</b> X EXIT ONLY	NONE	NO	NO
	<b>21</b> X CYL ONLY		<b>B1</b> 1-3/16 DIA. OUTSIDE 1-3/8 DIA. INSIDE	
1/4 DIA INSIDE 13/32 DIA OUTSIDE	<b>21</b>	R1701	NO	1-3/4 DIA. THRU
		R1702	NO	
	<b>R21</b>	R1703	<b>B1</b> 1-3/8 DIA. THRU	
		R1705	<b>B</b> 1-3/8 DIA. THRU	
		R1715	NO	

ALUMINUM DOOR AND FRAME WITH BLADE OR APPLIED STOP		
MIN. STILES	DEVICE SIZE	DOOR WIDTH
3-1/2"	3'-0"	2'-6" TO 2'-11"
	4'-0"	3'-0" TO 3'-11"
4-1/4 OR FLUSH DOOR	3'-0"	2'-7" TO 3'-0"
	4'-0"	3'-1" TO 4'-0"

PRECISION HARDWARE INC. WWW.PRECISIONHARDWARE.COM			
DEVICE SERIES		TRIM SERIES	
21, R21		EXIT ONLY, CYL ONLY, R1700	
STRIKE NO.	RELEASED DATE	TEMPLATE NO.	REV
S998	04/01/03	AL-21A	A