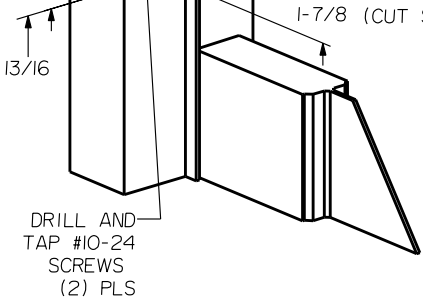
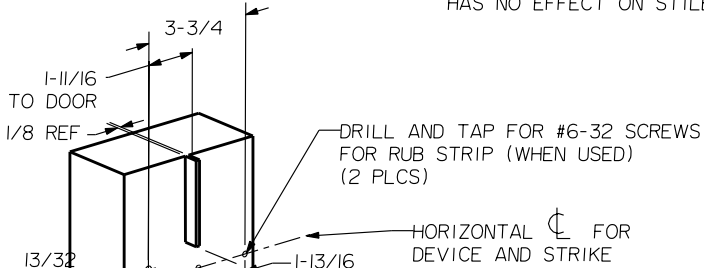
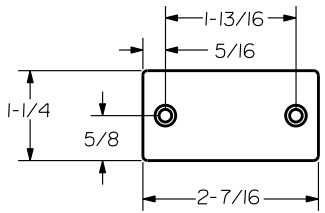


**SEX BOLT MACHINING**  
 DRILL 1/4 DIA. INSIDE  
 DRILL 5/16 DIA. OUTSIDE

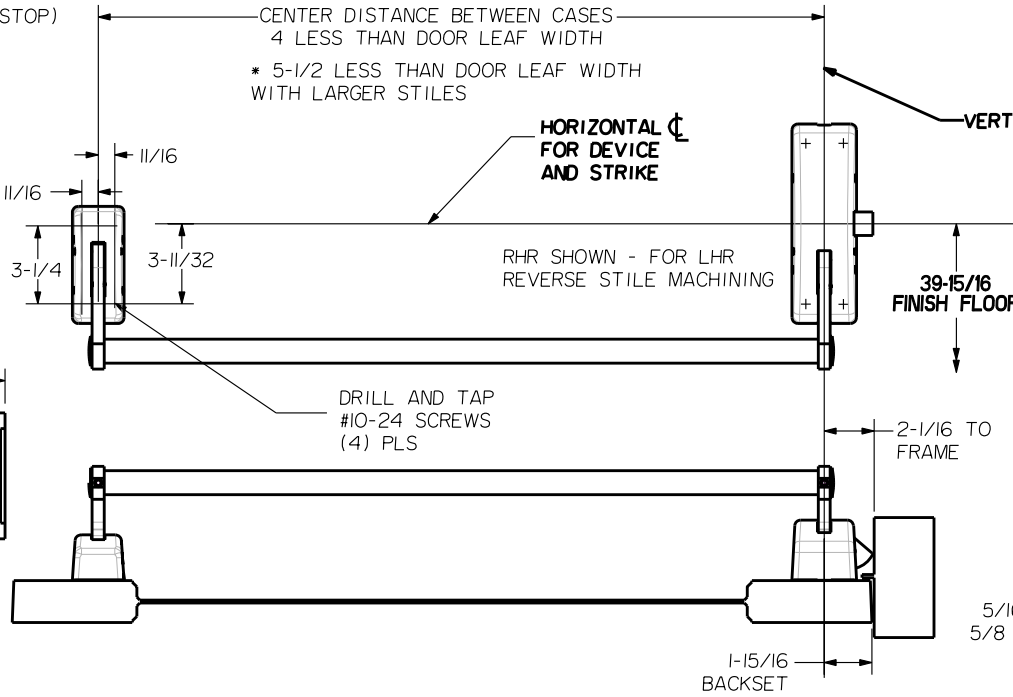
NOTE:  
 "LETTER" AT END OF TRIM MODEL NO. DESIGNATES LEVER  
 OR GRIP STYLE. EXCEPT AS NOTED, LEVER OR GRIP STYLE  
 HAS NO EFFECT ON STILE MACHINING.



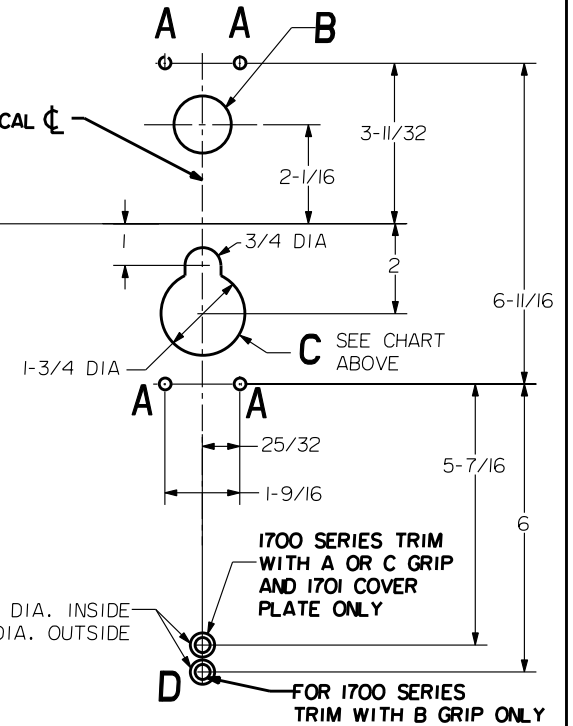
ROLLER STRIKE S988 (STANDARD)



RUB STRIP S454 (STANDARD)



**LOCK STILE MACHINING**



HOLE (4) PLS <b>A</b>	DEVICES	TRIMS	HOLE <b>B</b>	HOLE <b>C</b> THRU DOOR
#10-24 TAP INSIDE ONLY	<b>103.R103 X EXIT ONLY</b>	NONE	NO	NO
	<b>103.R103 X CYL ONLY</b>		1-3/8 DIA INSIDE 1-3/16 DIA OUTSIDE	
1/4 DIA INSIDE 13/32 DIA OUTSIDE	<b>103 R103</b>	1701,3901	NO	THRU DOOR
		1702,3902	NO	
	<b>108.R108</b>	Y1705 Y3908, Y3908	1-3/8 DIA THRU DOOR	
	<b>108.R108</b>	Y1715, Y3914	NO	

**ALUMINUM DOOR AND FRAME WITH BLADE OR APPLIED STOP**

MIN. STILES	DEVICE SIZE	DOOR WIDTH
3-1/2"	3'-0"	2'-6" TO 2'-10"
	4'-0"	3'-0" TO 3'-10"
4-3/4 OR FLUSH DOOR	3'-0"	2'-7" TO 3'-0"
	4'-0"	3'-1" TO 4'-0"

**PRECISION HARDWARE INC.**  
 WWW.PRECISIONHARDWARE.COM

DEVICE SERIES		TRIM SERIES	
100, R100,		EXIT ONLY, CYL ONLY, 1700, 3900	
STRIKE NO.	RELEASED DATE	TEMPLATE NO.	REV
S988	04/01/03	AL-100A	A