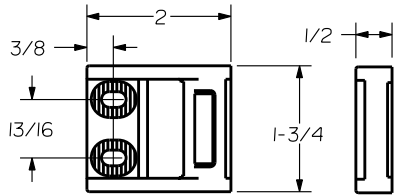
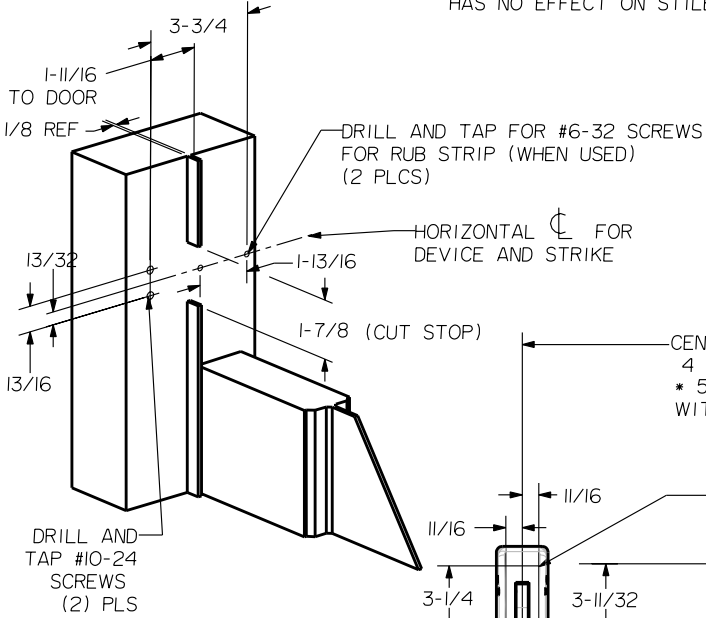
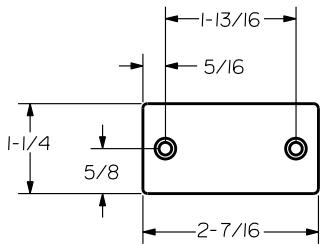


**SEX BOLT MACHINING**  
 DRILL 1/4 DIA. INSIDE  
 DRILL 5/16 DIA. OUTSIDE

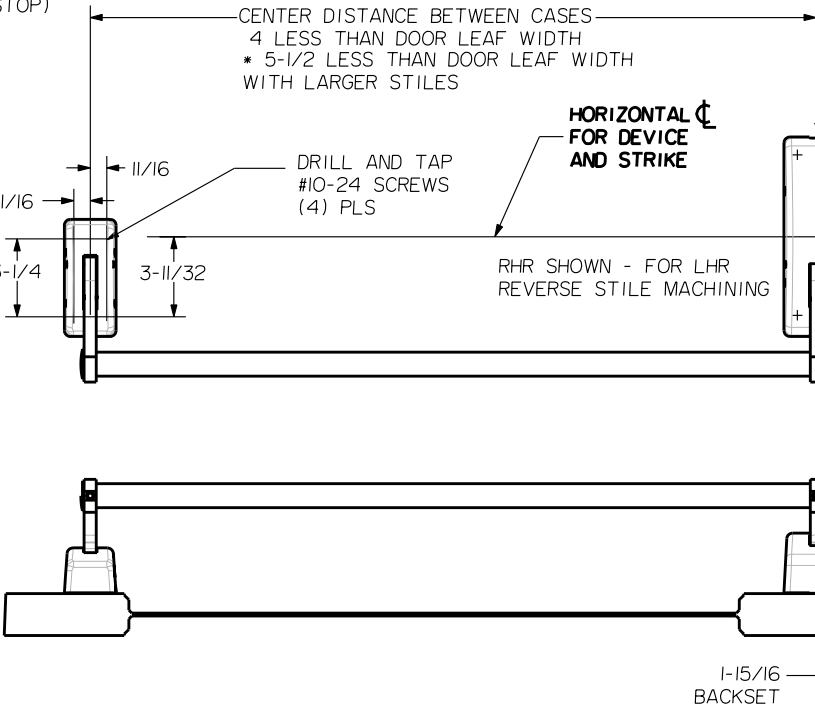
NOTE:  
 "LETTER" AT END OF TRIM MODEL NO. DESIGNATES  
 GRIP STYLE. EXCEPT AS NOTED, GRIP STYLE  
 HAS NO EFFECT ON STILE MACHINING.



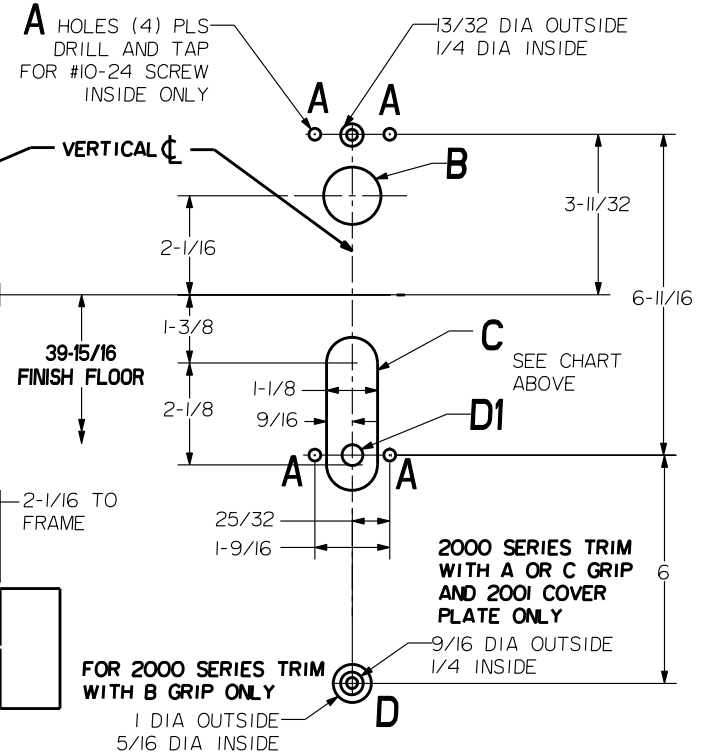
ROLLER STRIKE S988 (STANDARD)



RUB STRIP S454 (STANDARD)



**LOCK STILE MACHINING**



DEVICES	TRIMS	HOLE B 1-3/8 DIA. THRU DOOR	SLOT C THRU DOOR	D1
103.R103	2001	NO	NO	13/32 DIA OUTSIDE 1/4 DIA INSIDE
	2002			
	2003			
108.R108	Y2005	YES	YES	NO
	Y2015	NO		

ALUMINUM DOOR AND FRAME WITH BLADE OR APPLIED STOP		
MIN. STILES	DEVICE SIZE	DOOR WIDTH
3-1/2"	3'-0"	2'-6" TO 2'-10"
	4'-0"	3'-0" TO 3'-10"
4-3/4 OR FLUSH DOOR	3'-0"	2'-7" TO 3'-0"
	4'-0"	3'-1" TO 4'-0"

PRECISION HARDWARE INC. WWW.PRECISIONHARDWARE.COM			
DEVICE SERIES		TRIM SERIES	
100,R100		2000	
STRIKE NO.	RELEASED DATE	TEMPLATE NO.	REV
S988	04/01/03	AL-100B	A