

REINFORCEMENT REQUIREMENTS

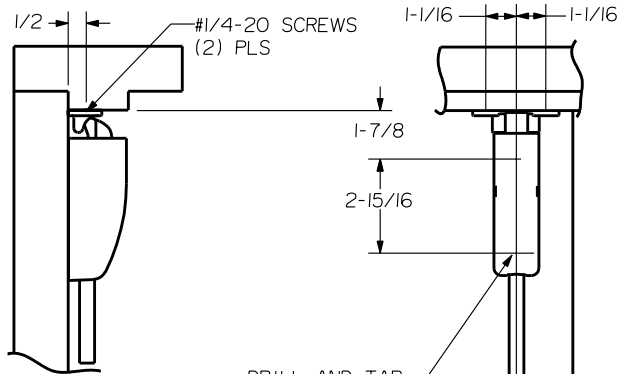
PROVIDE ADEQUATE REINFORCEMENT TO METAL COVERED COMPOSITE AND HOLLOW METAL DOORS FOR THE DRILLING AND TAPPING OF THE MACHINE SCREWS.

SEX NUTS AND BOLTS

SEX BOLTS ARE REQUIRED FOR PLASTIC, WOOD, METAL COVERED COMPOSITE AND HOLLOW METAL DOORS WITHOUT REINFORCEMENT

SEX BOLT MACHINING

DRILL 1/4 DIA INSIDE
DRILL 5/16 DIA OUTSIDE

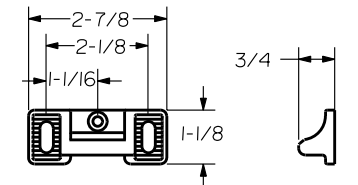


DRILL AND TAP FOR #10-24 SCREWS (2) PLS

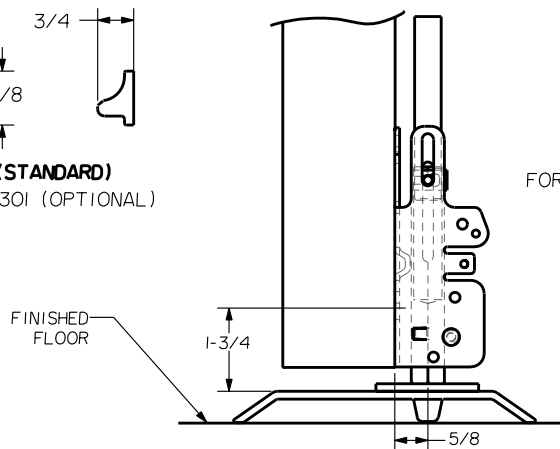
PREPARE THESE HOLES AT DEVICE INSTALLATION

HORIZONTAL FOR DEVICE AND LOCKCASE

RHR SHOWN - FOR LHR REVERSE STILE MACHINING



STRIKE S300 (STANDARD)
ROLLER STRIKE S301 (OPTIONAL)



THRESHOLD APPLICATION

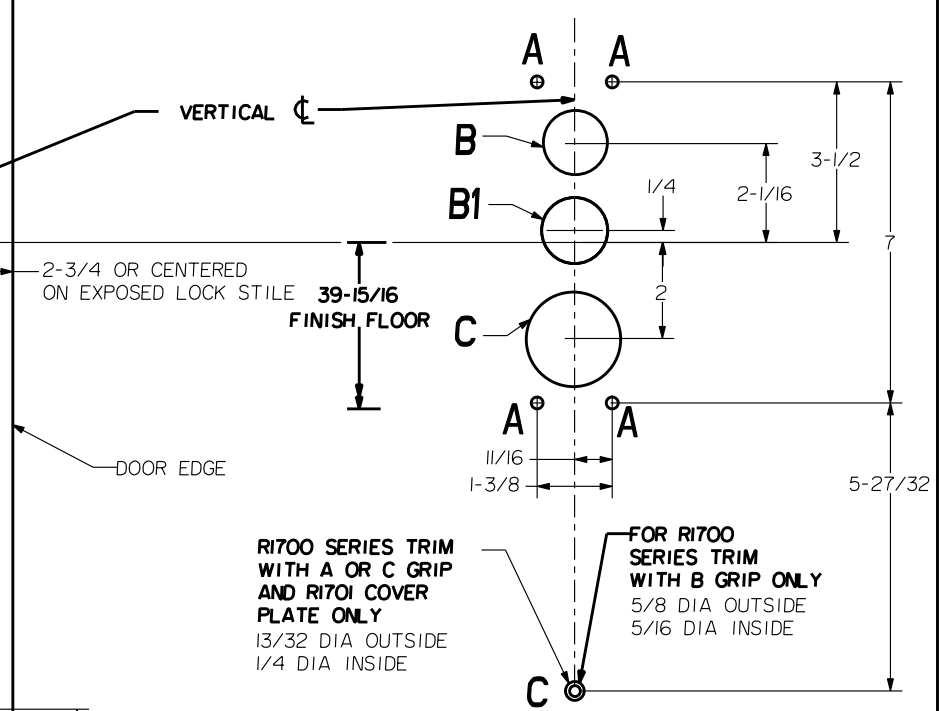
DRILL AND TAP FOR #10-24 SCREWS (2) PLS

STRIKE S460

FINISHED FLOOR

HOLE (4) PLS A	DEVICES	TRIMS	HOLE B OR B1	HOLE C
#10-24 TAP INSIDE ONLY	22.FL22 X EXIT ONLY	NONE	NO	NO
	22.FL22 X CYL ONLY		B1 1-3/16 DIA. OUTSIDE 1-3/8 DIA. INSIDE	
1/4 DIA INSIDE 3/32 DIA OUTSIDE	22.FL22	R1701	NO	1-3/4 DIA. THRU
		R1702	NO	
	R1703	B1 1-3/8 DIA. THRU		
	R1705	B 1-3/8 DIA. THRU		
	R22.FLR22	R1715	NO	

LOCK STILE MACHINING



2-3/4 OR CENTERED ON EXPOSED LOCK STILE
39-15/16 FINISH FLOOR

R1700 SERIES TRIM WITH A OR C GRIP AND R1701 COVER PLATE ONLY
13/32 DIA OUTSIDE
1/4 DIA INSIDE

FOR R1700 SERIES TRIM WITH B GRIP ONLY
5/8 DIA OUTSIDE
5/16 DIA INSIDE

PRECISION HARDWARE INC.
WWW.PRECISIONHARDWARE.COM

DEVICE SERIES		TRIM SERIES	
22, FL22, R22, FLR22 22LBR, FL22LBR, R22LBR, FLR22LBR		EXIT ONLY, CYL ONLY, R1700	
STRIKE NO.	RELEASED DATE	TEMPLATE NO.	REV
S300, S301, S460	04/01/03	HM-22A	A

NOTE: "LETTER" AT END OF TRIM MODEL NO. DESIGNATES GRIP STYLE. EXCEPT AS NOTED, GRIP STYLE HAS NO EFFECT ON STILE MACHINING.

LBR DEVICES:
OMIT BOTTOM BOLT MACHINING.
FIRE BOLT REQ'D FOR FL DEVICES
SEE DRAWING OI297-II-000 FOR DETAILS