

REINFORCEMENT REQUIREMENTS

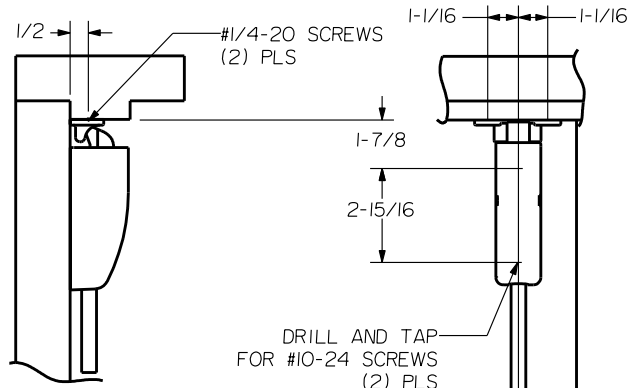
PROVIDE ADEQUATE REINFORCEMENT TO METAL COVERED COMPOSITE AND HOLLOW METAL DOORS FOR THE DRILLING AND TAPPING FOR THE MACHINE SCREWS.

SEX NUTS AND BOLTS

SEX BOLTS ARE REQUIRED FOR PLASTIC, WOOD, METAL COVERED COMPOSITE AND HOLLOW METAL DOORS WITHOUT REINFORCEMENT

SEX BOLT MACHINING

DRILL 1/4 DIA. INSIDE
DRILL 5/16 DIA. OUTSIDE



DRILL AND TAP FOR #10-24 SCREWS (2) PLS

PREPARE THESE HOLES AT DEVICE INSTALLATION

HORIZONTAL ϕ FOR DEVICE AND LOCKCASE

VERTICAL ϕ

BACKSET 2-3/4 OR CENTERED ON EXPOSED LOCK STILE

RHR SHOWN - FOR LHR REVERSE STILE MACHINING

40-5/16 FINISH FLOOR

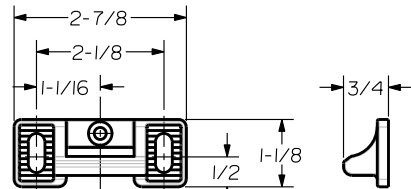
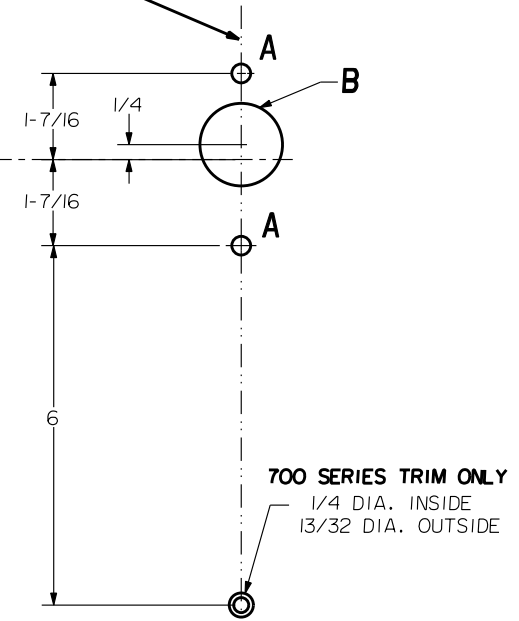
DOOR EDGE

DRILL AND TAP FOR #10-24 SCREWS (2) PLS

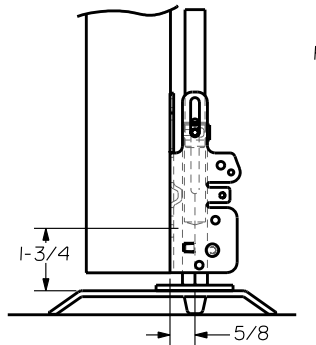
FINISHED FLOOR

STRIKE S460

LOCK STILE MACHINING



STRIKE S300 (STANDARD)
ROLLER STRIKE S301 (OPTIONAL)



THRESHOLD APPLICATION

| DEVICES | TRIMS | HOLE (2) PLS A | HOLE B |
|---------|-----------|------------------------|--|
| 52.FL52 | EXIT ONLY | #10-24 TAP INSIDE ONLY | NO |
| | CYL ONLY | | 1-3/16 DIA OUTSIDE 1-3/8 DIA INSIDE |
| | 501 | 5/16 DIA. THRU | NO |
| | 602 | | 1-3/8 DIA THRU |
| | 603 | | NO |
| | 702 | | 1-3/8 DIA THRU |
| 703 | | 1-3/8 DIA THRU | |

NOTE: FITS STOCK DOORS WITH ANSI A115.17 (161) AND ANSI A115.18 CUT-OUTS, REQUIRE TRIM THRU BOLT HOLES AT DEVICE INSTALLATION.

LBR DEVICES:
OMIT BOTTOM BOLT MACHINING.
FIRE BOLT REQ'D FOR FL DEVICES
SEE DRAWING 01297-II-000 FOR DETAILS

PRECISION HARDWARE INC.
WWW.PRECISIONHARDWARE.COM

| DEVICE SERIES | | TRIM SERIES | |
|--------------------------|---------------|--|-----|
| 52, FL52, 52LBR, FL52LBR | | EXIT ONLY, CYL ONLY 501, 602, 603, 702, 703 | |
| STRIKE NO. | RELEASED DATE | TEMPLATE NO. | REV |
| S300, S301, S460 | 04/01/03 | HM-52A | A |