

**REINFORCEMENT REQUIREMENTS**

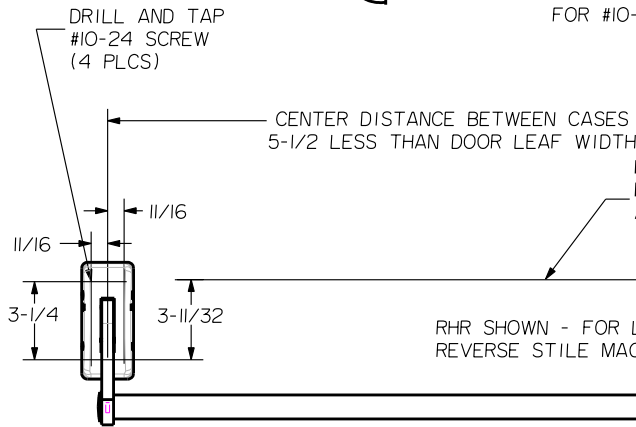
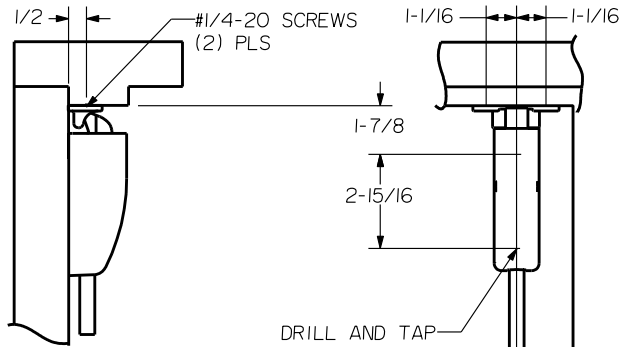
PROVIDE ADEQUATE REINFORCEMENT TO METAL COVERED COMPOSITE AND HOLLOW METAL DOORS FOR THE DRILLING AND TAPPING OF THE MACHINE SCREWS.

**SEX NUTS AND BOLTS**

SEX BOLTS ARE REQUIRED FOR PLASTIC, WOOD, METAL COVERED COMPOSITE AND HOLLOW METAL DOORS WITHOUT REINFORCEMENT

**SEX BOLT MACHINING**

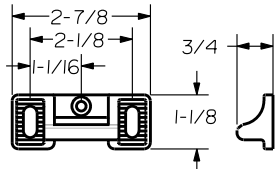
DRILL 1/4 DIA. INSIDE  
DRILL 5/16 DIA. OUTSIDE



DRILL AND TAP FOR #10-24 SCREWS (2) PLS

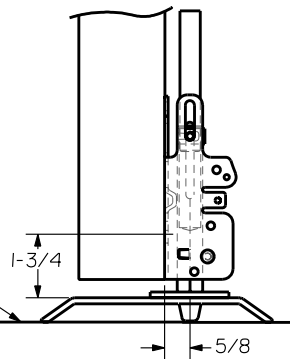
HORIZONTAL FOR DEVICE AND STRIKE

RHR SHOWN - FOR LHR REVERSE STILE MACHINING



**STRIKE S300 (STANDARD)**  
ROLLER STRIKE S30I (OPTIONAL)

FINISHED FLOOR



**THRESHOLD APPLICATION**

DRILL AND TAP FOR #10-24 SCREWS (2) PLS

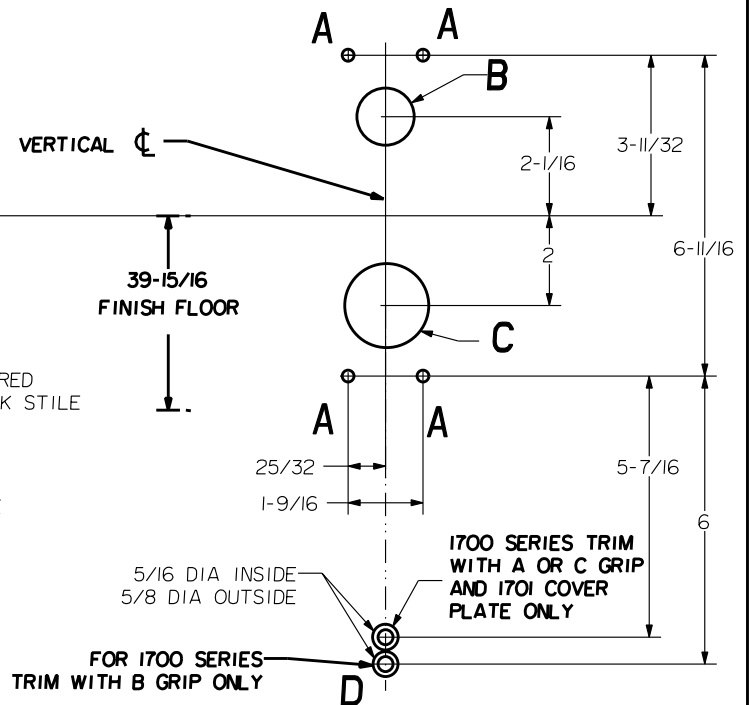
FINISHED FLOOR

STRIKE S460

**LBR DEVICES:**  
OMIT BOTTOM BOLT MACHINING.  
FIRE BOLT REQ'D FOR FL DEVICES  
SEE DRAWING OI297-II-000 FOR DETAILS

HOLE (4) PLS <b>A</b>	DEVICES	TRIMS	HOLE <b>B</b>	HOLE <b>C</b>	
#10-24 TAP INSIDE ONLY	203.FL203 X EXIT ONLY	NONE	NO	NO	
	203.FL203 X CYL ONLY		1-3/8 DIA INSIDE 1-3/16 DIA OUTSIDE		
1/4 DIA INSIDE 13/32 DIA OUTSIDE	203.FL203	1701,390I	NO	1-3/4 DIA THRU DOOR	
		1702,3902			
	208.FL208	Y1705 Y3908,VY3908	1-3/8 DIA THRU DOOR		
		208.FL208	Y1715,Y3914		NO

**LOCK STILE MACHINING**



**PRECISION HARDWARE INC.**  
WWW.PRECISIONHARDWARE.COM

DEVICE SERIES		TRIM SERIES	
200, FL200, 200LBR, FL200LBR		EXIT ONLY, CYL ONLY, 1700,3900	
STRIKE NO.	RELEASED DATE	TEMPLATE NO.	REV
S300, S30I, S460	04/01/03	HM-200A	A