

REINFORCEMENT REQUIREMENTS

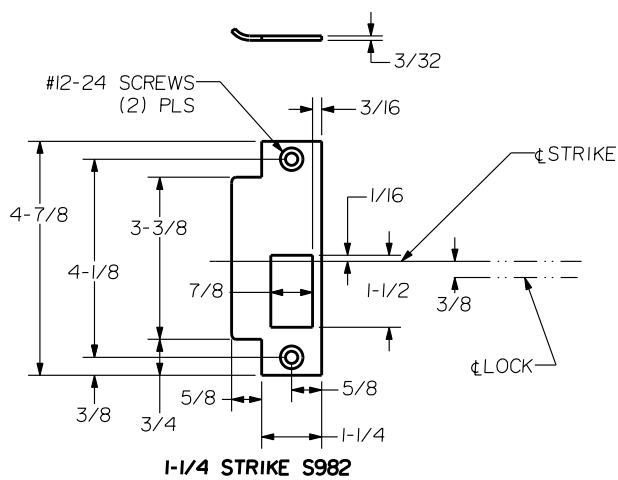
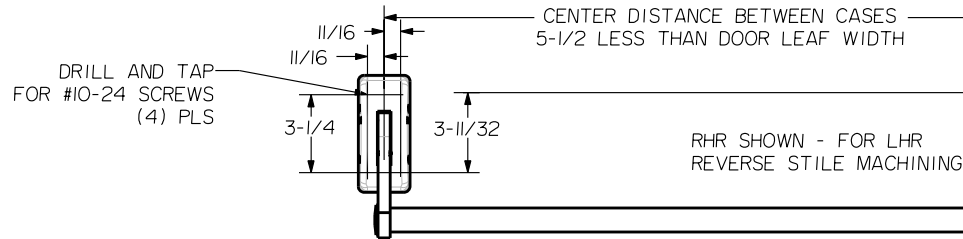
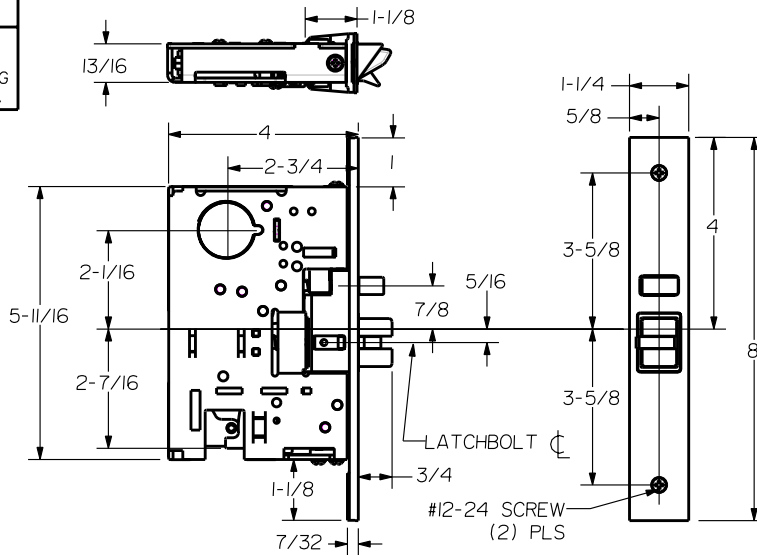
PROVIDE ADEQUATE REINFORCEMENT TO METAL COVERED COMPOSITE AND HOLLOW METAL DOORS FOR THE DRILLING AND TAPPING FOR THE MACHINE SCREWS.

SEX NUTS AND BOLTS

SEX BOLTS ARE REQUIRED FOR PLASTIC, WOOD, METAL COVERED COMPOSITE AND HOLLOW METAL DOORS WITHOUT REINFORCEMENT

SEX BOLT MACHINING

DRILL 1/4 DIA. INSIDE
DRILL 5/16 DIA. OUTSIDE



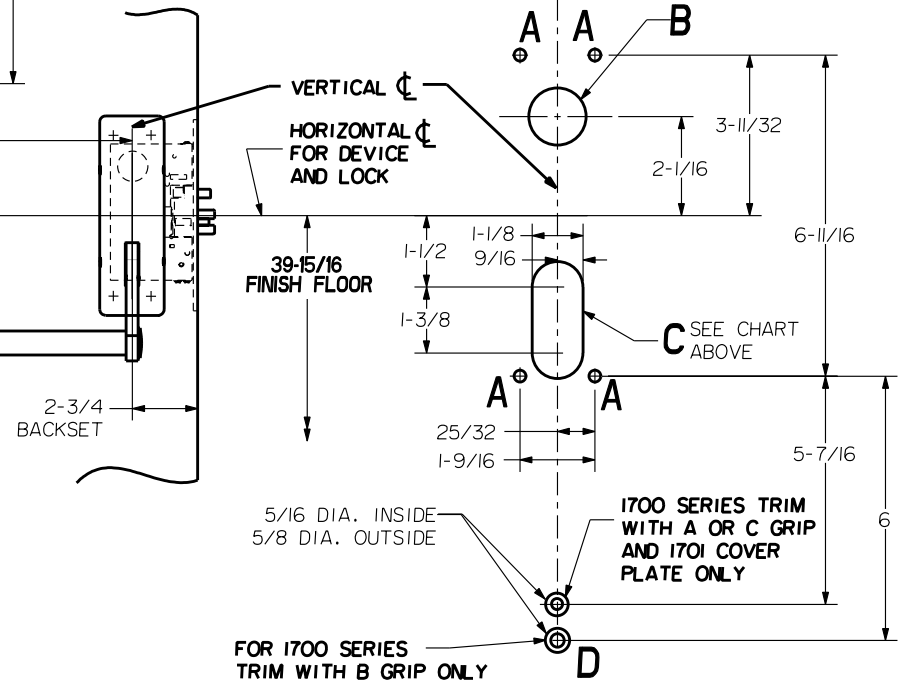
1-1/4 STRIKE S982

NOTE:
"LETTER" AT END OF TRIM MODEL NO. DESIGNATES LEVER OR GRIP STYLE. EXCEPT AS NOTED, LEVER OR GRIP STYLE HAS NO EFFECT ON STILE MACHINING.

S985,S984 OPTIONAL OPEN BACK STRIKES
SEE TEMPLATE NUMBER HM-S985

HOLE (4) PLS A	DEVICES	TRIMS	HOLE B	HOLE C
#10-24 TAP INSIDE ONLY	303.FL303 X EXIT ONLY	NONE	NO	SLOT INSIDE ONLY
	303.FL303 X CYL ONLY		1-3/16 DIA OUTSIDE	
1/4 DIA INSIDE 3/32 DIA OUTSIDE	303.FL303	1701,3901	NO	SLOT THRU DOOR
		1702,3902	NO	
	308.FL308	M1705 M3908 VM3908	1-3/8 DIA OUTSIDE ONLY	
308.FL308	M1715,M3914	NO		

LOCK STILE MACHINING



PRECISION HARDWARE INC.
WWW.PRECISIONHARDWARE.COM

DEVICE SERIES		TRIM SERIES	
300, FL300		EXIT ONLY, CYL ONLY, 1700,3900	
STRIKE NO.	RELEASED DATE	TEMPLATE NO.	REV
S982	04/01/03	HM-300A	A