

REINFORCEMENT REQUIREMENTS

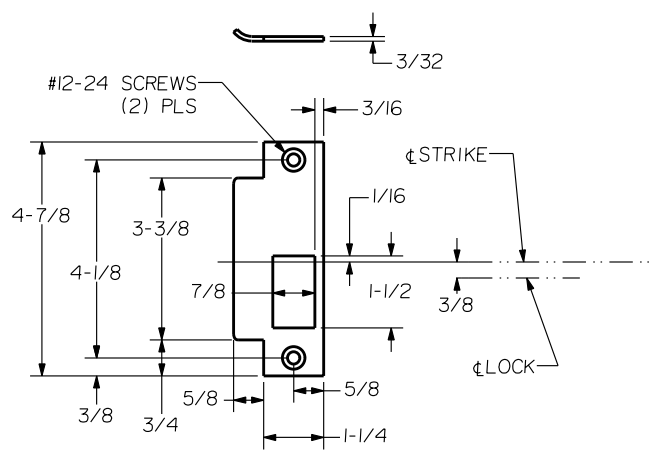
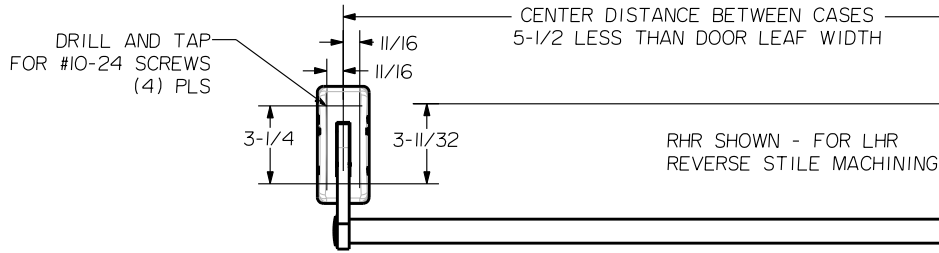
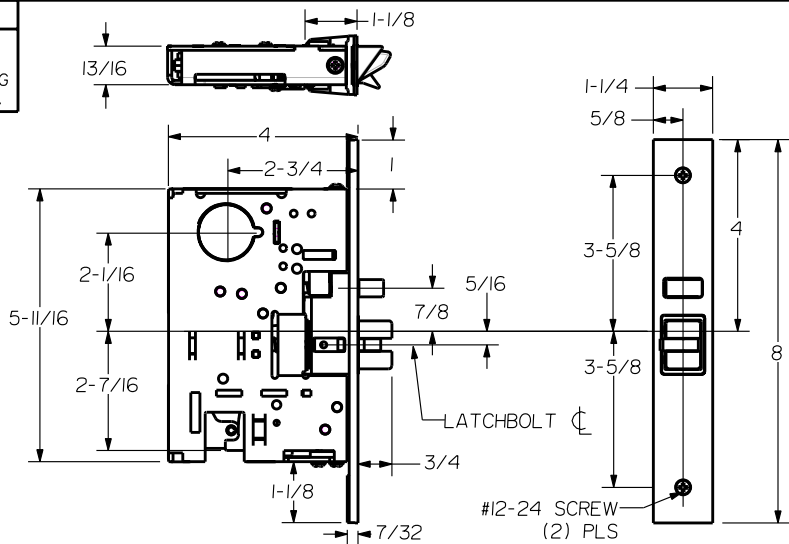
PROVIDE ADEQUATE REINFORCEMENT TO METAL COVERED COMPOSITE AND HOLLOW METAL DOORS FOR THE DRILLING AND TAPPING FOR THE MACHINE SCREWS.

SEX NUTS AND BOLTS

SEX BOLTS ARE REQUIRED FOR PLASTIC, WOOD, METAL COVERED COMPOSITE AND HOLLOW METAL DOORS WITHOUT REINFORCEMENT

SEX BOLT MACHINING

DRILL 1/4 DIA. INSIDE
DRILL 5/16 DIA. OUTSIDE



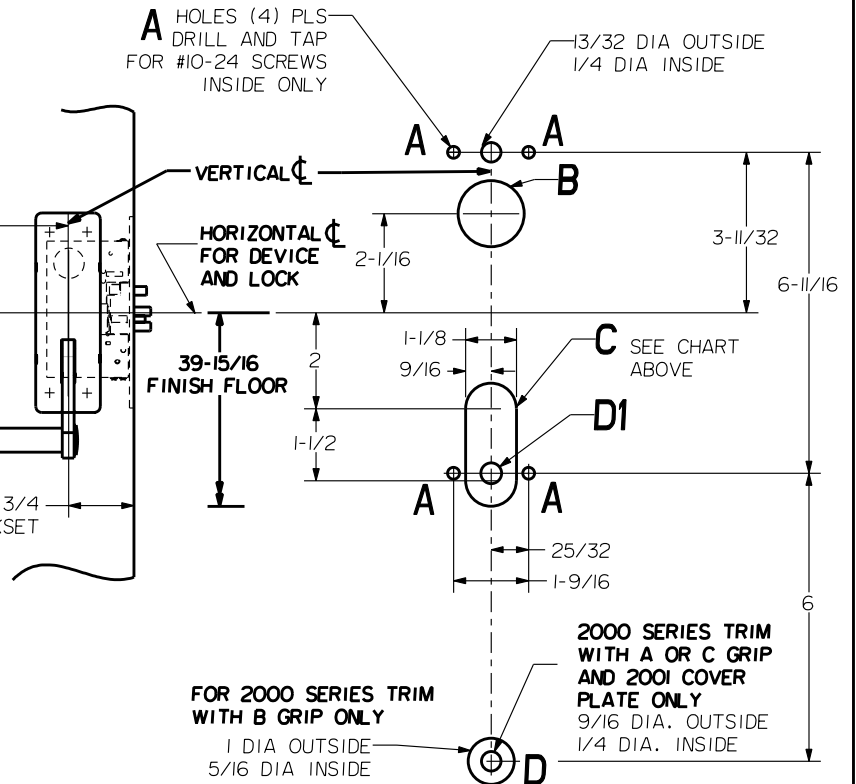
1-1/4 STRIKE S982

NOTE:
"LETTER" AT END OF TRIM MODEL NO. DESIGNATES GRIP STYLE. EXCEPT AS NOTED GRIP STYLE HAS NO EFFECT ON STILE MACHINING.

S985,S984 OPTIONAL OPEN BACK STRIKES
SEE TEMPLATE NUMBER HM-S985

DEVICES	TRIMS	HOLE B 1-3/8 DIA. THRU DOOR	SLOT C	D1
303.FL303	2001	NO	INSIDE ONLY	13/32 DIA OUTSIDE
	2002			
	2003	YES	THRU DOOR	NO
308.FL308	M2005	NO		
	M2015			

LOCK STILE MACHINING



PRECISION HARDWARE INC.
WWW.PRECISIONHARDWARE.COM

DEVICE SERIES		TRIM SERIES	
300, FL300		2000	
STRIKE NO.	RELEASED DATE	TEMPLATE NO.	REV
S982	04/01/03	HM-300B	A