

**REINFORCEMENT REQUIREMENTS**

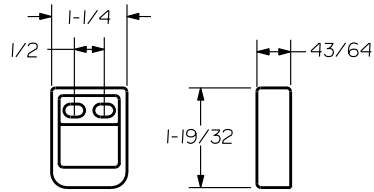
PROVIDE ADEQUATE REINFORCEMENT TO METAL COVERED COMPOSITE AND HOLLOW METAL DOORS FOR THE DRILLING AND TAPPING FOR THE MACHINE SCREWS.

**SEX NUTS AND BOLTS**

SEX BOLTS ARE REQUIRED FOR PLASTIC, WOOD, METAL COVERED COMPOSITE AND HOLLOW METAL DOORS WITHOUT REINFORCEMENT

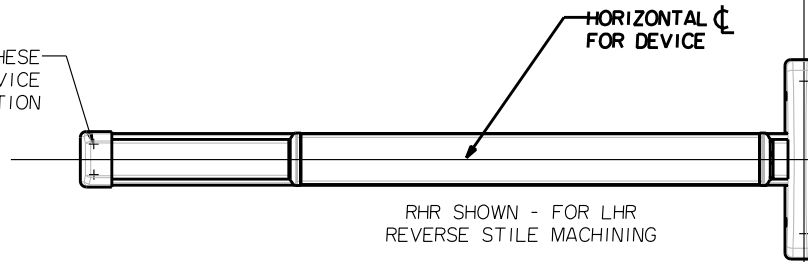
**SEX BOLT MACHINING**

DRILL 1/4 DIA. INSIDE  
DRILL 5/16 DIA. OUTSIDE

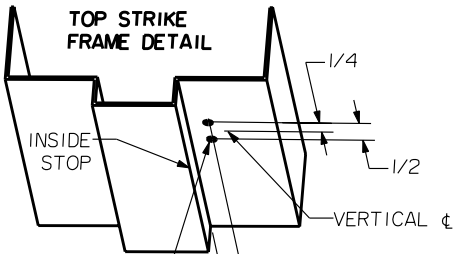


**S519 TOP STRIKE**  
(SURFACE APPLIED)

PREPARE THESE HOLES AT DEVICE INSTALLATION



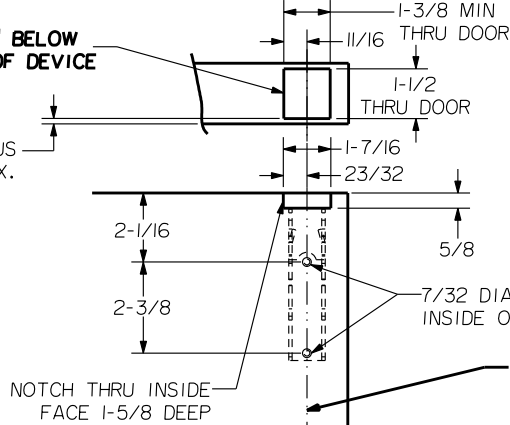
RHR SHOWN - FOR LHR REVERSE STILE MACHINING



DRILL AND TAP FOR #10-24 SCREWS

**LBR DEVICES:**  
OPENING TO GO 8" BELOW HORIZONTAL CL OF DEVICE

DOOR SKIN PLUS REINFORCEMENT - 5/32 MAX.



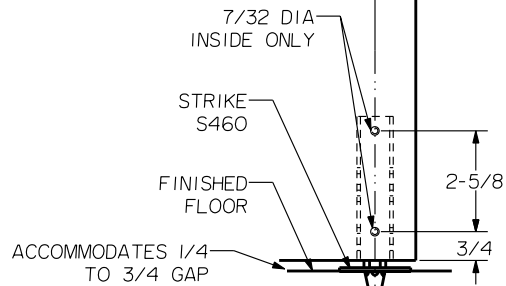
HORIZONTAL CL FOR DEVICE

VERTICAL CL

1-11/16 BACKSET 3 STILE MIN.

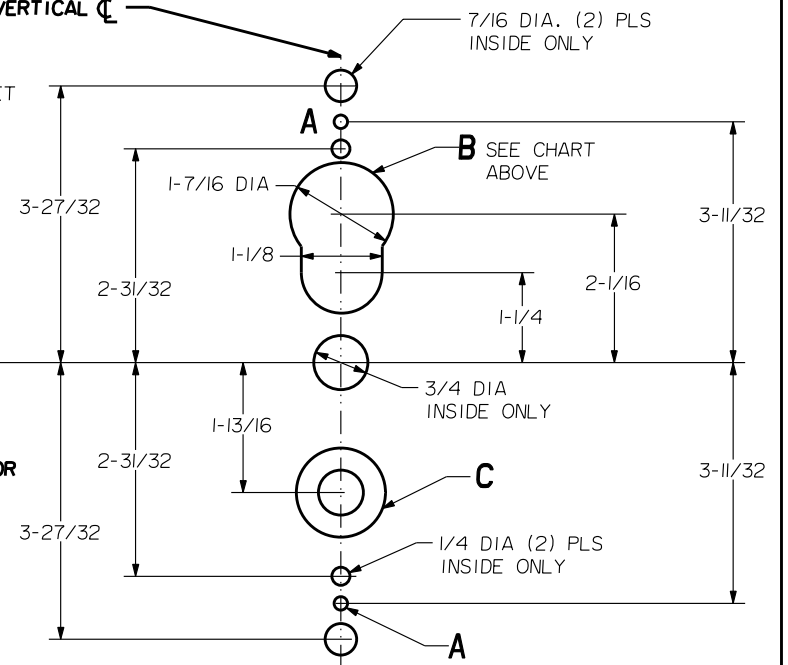
DOOR EDGE

39-15/16 FINISHED FLOOR



DEVICES	TRIMS	HOLE (2) PLS A	HOLE B	HOLE C
26.FL26	2908	1/4 DIA INSIDE 13/32 DIA OUTSIDE	OUTSIDE ONLY	5/8 DIA INSIDE 1-3/8 DIA OUTSIDE
	2914		NOT REQ'D	

**LOCK STILE MACHINING**



**PRECISION HARDWARE INC.**  
WWW.PRECISIONHARDWARE.COM

DEVICE SERIES		TRIM SERIES	
26, FL26, 26LBR, FL26LBR		2908, 2914	
STRIKE NO.	RELEASED DATE	TEMPLATE NO.	REV
S519, S460	04/01/03	HM-26B	A

**LBR DEVICES:**  
OMIT BOTTOM BOLT MACHINING.  
FIRE BOLT REQ'D FOR FL DEVICES  
SEE DRAWING 01297-II-000 FOR DETAILS

NOTE: "LETTER" AT END OF TRIM MODEL NO. DESIGNATES LEVER STYLE. EXCEPT AS NOTED, LEVER STYLE HAS NO EFFECT ON STILE MACHINING.