

**REINFORCEMENT REQUIREMENTS**

PROVIDE ADEQUATE REINFORCEMENT TO METAL COVERED COMPOSITE AND HOLLOW METAL DOORS FOR THE DRILLING AND TAPPING FOR THE MACHINE SCREWS.

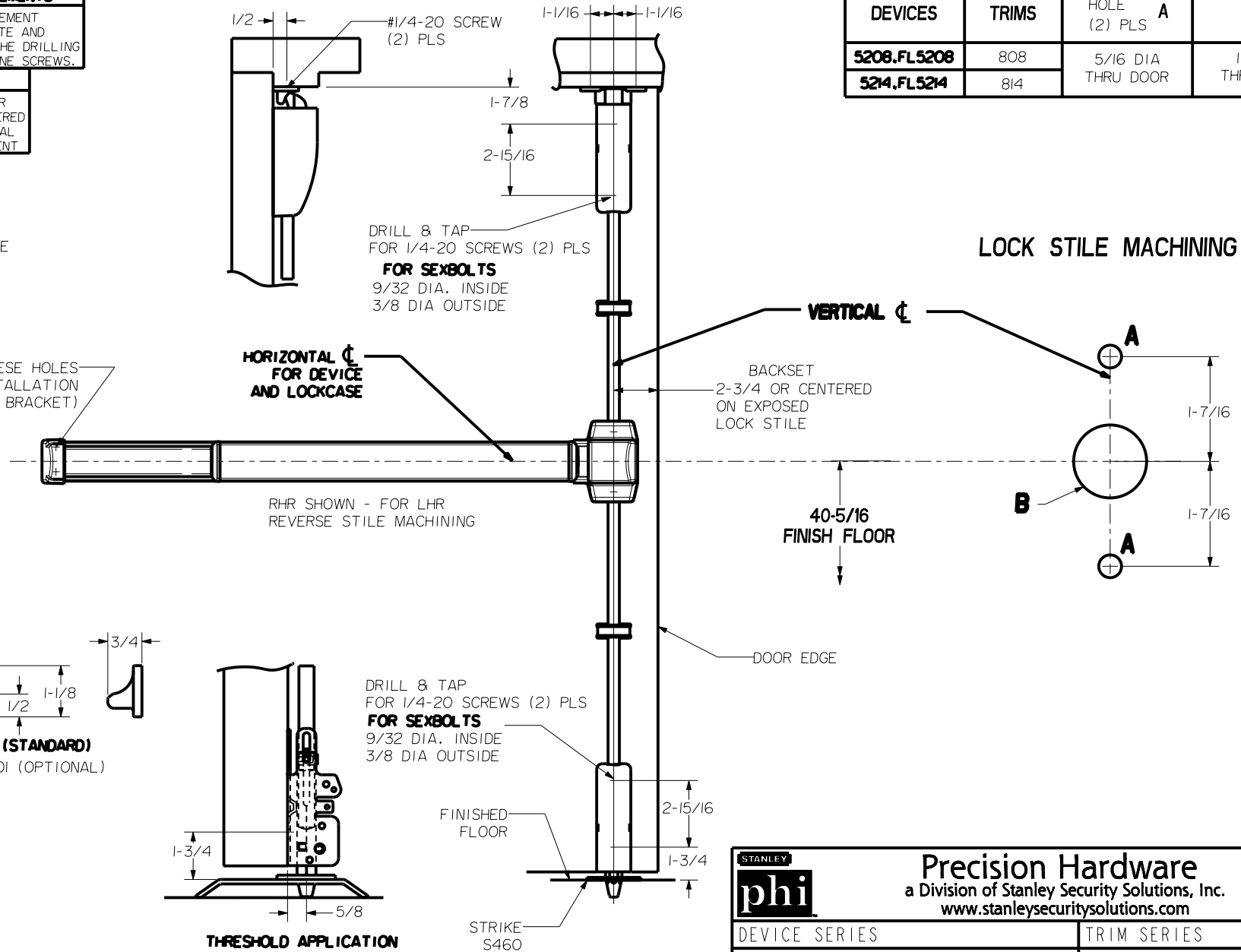
**SEX NUTS AND BOLTS**


SEX BOLTS ARE REQUIRED FOR PLASTIC, WOOD, METAL COVERED COMPOSITE AND HOLLOW METAL DOORS WITHOUT REINFORCEMENT

**SEX BOLT MACHINING**

HOLE "A" (2) PLS AND MOUNTING BRACKET  
 DRILL 1/4 DIA. INSIDE  
 DRILL 3/8 DIA. OUTSIDE

DEVICES	TRIMS	HOLE (2) PLS A	HOLE B
5208, FL5208	808	5/16 DIA THRU DOOR	1" DIA. THRU DOOR
5214, FL5214	814		



 <b>Precision Hardware</b> a Division of Stanley Security Solutions, Inc. <a href="http://www.stanleysecuritysolutions.com">www.stanleysecuritysolutions.com</a>			
DEVICE SERIES		TRIM SERIES	
5200, FL5200, 5200LBR, FL5200LBR		808, 814	
STRIKE NO.	RELEASED DATE	TEMPLATE NO.	REV
S300, S301, S460	5/01/05	HM-5200B	C

**LBR DEVICES:**  
 OMIT BOTTOM BOLT MACHINING.  
 FIRE BOLT REQ'D FOR FL DEVICES  
 SEE DRAWING 01297-II-000 FOR DETAILS

NOTE: FITS STOCK DOORS WITH ANSI A115.17 (161) AND ANSI A115.18 CUT-OUTS. REQUIRE TRIM THRU BOLT HOLES AT DEVICE INSTALLATION.