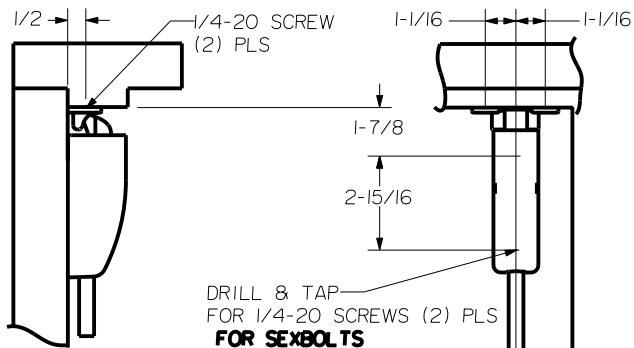


REINFORCEMENT REQUIREMENTS
 PROVIDE ADEQUATE REINFORCEMENT TO METAL COVERED COMPOSITE AND HOLLOW METAL DOORS FOR THE DRILLING AND TAPPING OF THE MACHINE SCREWS.

SEX NUTS AND BOLTS
 SEX BOLTS ARE REQUIRED FOR PLASTIC, WOOD, METAL COVERED COMPOSITE AND HOLLOW METAL DOORS WITHOUT REINFORCEMENT

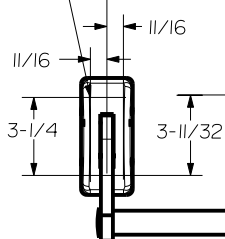
SEX BOLT MACHINING
 HOLE "A" (4) PLS AND INACTIVE CASE
 DRILL 1/4 DIA. INSIDE
 DRILL 3/8 DIA. OUTSIDE



DRILL & TAP FOR 1/4-20 SCREWS (2) PLS FOR SEXBOLTS
 9/32 DIA. INSIDE
 3/8 DIA OUTSIDE

DRILL AND TAP #10-24 SCREW (4 PLCS - INACTIVE CASE)

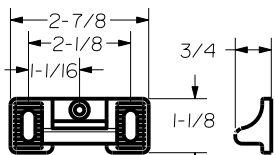
CENTER DISTANCE BETWEEN CASES
 5-1/2 LESS THAN DOOR LEAF WIDTH



HORIZONTAL CL FOR DEVICE

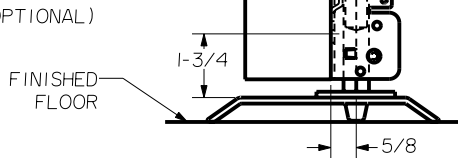
RHR SHOWN - FOR LHR REVERSE STILE MACHINING

39-15/16 FINISH FLOOR

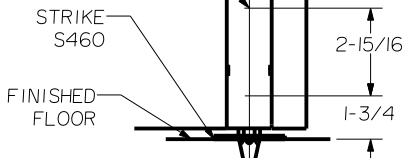


STRIKE S300 (STANDARD)
 ROLLER STRIKE S30I (OPTIONAL)

DRILL & TAP FOR 1/4-20 SCREWS (2) PLS FOR SEXBOLTS
 9/32 DIA. INSIDE
 3/8 DIA OUTSIDE



THRESHOLD APPLICATION



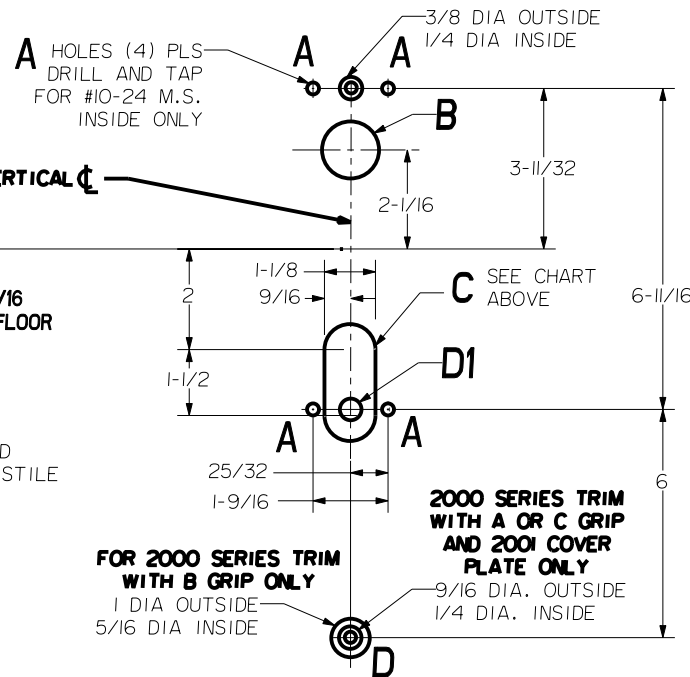
STRIKE S460
 FINISHED FLOOR

DOOR EDGE

2-3/4 OR CENTERED ON EXPOSED LOCK STILE

VERTICAL CL

LOCK STILE MACHINING




2000 SERIES TRIM WITH A OR C GRIP AND 200I COVER PLATE ONLY
FOR 2000 SERIES TRIM WITH B GRIP ONLY
 1 DIA OUTSIDE
 5/16 DIA INSIDE

| DEVICES | TRIMS | HOLE B 1-3/8 DIA. THRU DOOR | SLOT C THRU DOOR | D1 |
|-----------|-------|-----------------------------------|---------------------|-----------------------------------|
| 201.FL201 | 2001 | NO | NO | 3/8 DIA OUTSIDE 1/4 DIA INSIDE |
| 202.FL202 | 2002 | | | |
| 203.FL203 | 2003 | | | |
| 205.FL205 | Y2005 | YES | YES | NO |
| 215.FL215 | Y2015 | NO | | |

NOTE:
 "LETTER" AT END OF TRIM MODEL NO. DESIGNATES GRIP STYLE. EXCEPT AS NOTED, GRIP STYLE HAS NO EFFECT ON STILE MACHINING.

LBR DEVICES:
 OMIT BOTTOM BOLT MACHINING.
 FIRE BOLT REQ'D FOR FL DEVICES
 SEE DRAWING 01297-II-000 FOR DETAILS

|  Precision Hardware a Division of Stanley Security Solutions, Inc. www.stanleysecuritysolutions.com | | | |
|---|---------------|--------------|-----|
| DEVICE SERIES | | TRIM SERIES | |
| 200, FL200, 200LBR, FL200LBR | | 2000 | |
| STRIKE NO. | RELEASED DATE | TEMPLATE NO. | REV |
| S300, S30I, S460 | 5/01/05 | HM-200B | C |