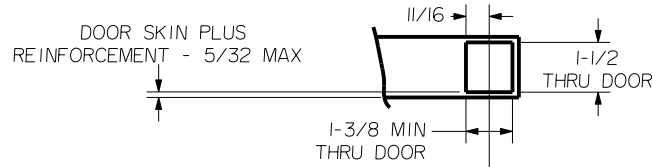
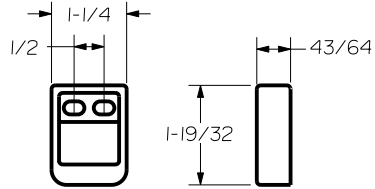


**SEX BOLT MACHINING**  
 DRILL 1/4 DIA. INSIDE  
 DRILL 3/8 DIA. OUTSIDE

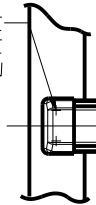


NOTCH THRU INSIDE FACE 1-5/8 DEEP



**S519 TOP STRIKE**  
(SURFACE APPLIED)

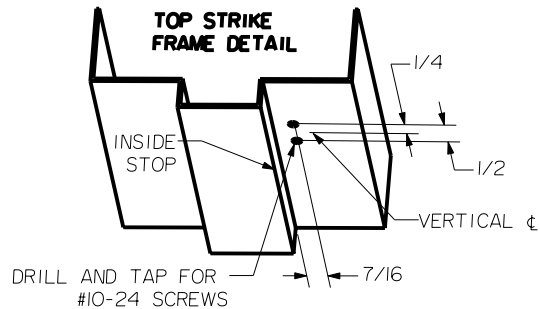
PREPARE THESE HOLES AT DEVICE INSTALLATION



**HORIZONTAL CL**  
FOR DEVICE

RHR SHOWN - FOR LHR REVERSE STILE MACHINING

**TOP STRIKE FRAME DETAIL**



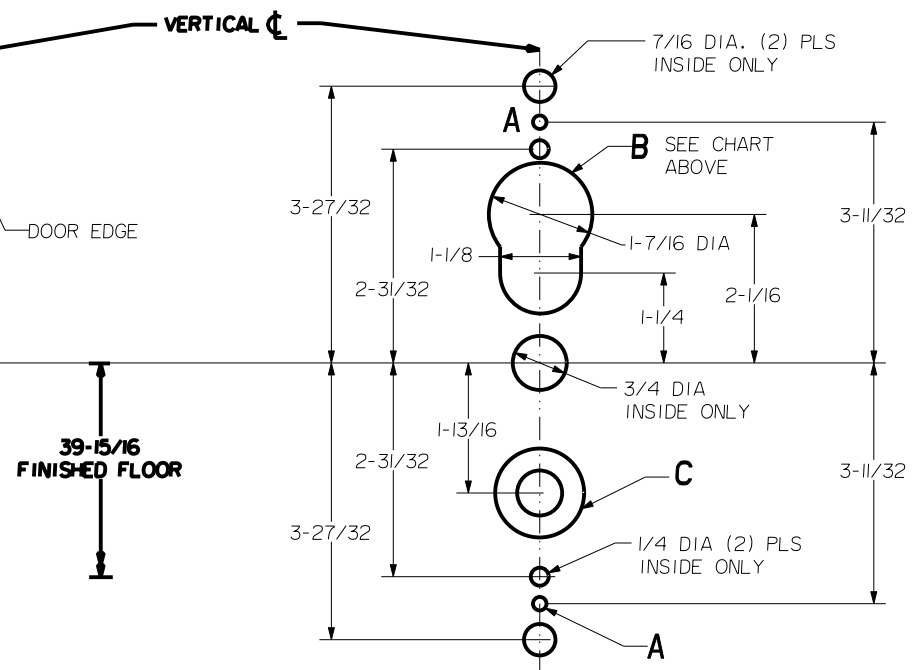
ACCOMMODATES 1/4 TO 3/4 GAP


**LBR DEVICES:**  
 OMIT BOTTOM BOLT MACHINING.

NOTE: "LETTER" AT END OF TRIM MODEL NO. DESIGNATES LEVER STYLE. EXCEPT AS NOTED, LEVER STYLE HAS NO EFFECT ON STILE MACHINING.

DEVICES	TRIMS	HOLE (2) PLS A	HOLE B	HOLE C
2608	2908	1/4 DIA INSIDE 13/32 DIA OUTSIDE	OUTSIDE ONLY	5/8 DIA INSIDE 1-3/8 DIA OUTSIDE
2614	2914		NOT REQ'D	

**LOCK STILE MACHINING**



 <b>Precision Hardware</b> a Division of Stanley Security Solutions, Inc. <a href="http://www.stanleysecuritysolutions.com">www.stanleysecuritysolutions.com</a>			
DEVICE SERIES		TRIM SERIES	
2600, 2600LBR		2908, 2914	
STRIKE NO.	RELEASED DATE	TEMPLATE NO.	REV
S519, S460	5/01/05	AL-2600B	C