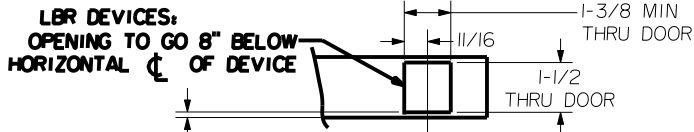


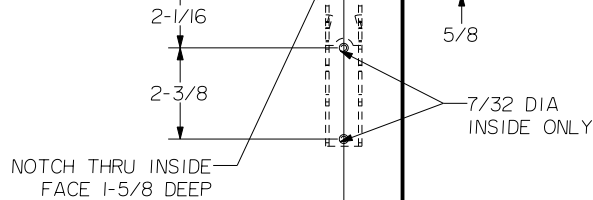
REINFORCEMENT REQUIREMENTS
 PROVIDE ADEQUATE REINFORCEMENT TO METAL COVERED COMPOSITE AND HOLLOW METAL DOORS FOR THE DRILLING AND TAPPING FOR THE MACHINE SCREWS.

SEX NUTS AND BOLTS
 SEX BOLTS ARE REQUIRED FOR PLASTIC, WOOD, METAL COVERED COMPOSITE AND HOLLOW METAL DOORS WITHOUT REINFORCEMENT

SEX BOLT MACHINING
 DRILL 1/4 DIA. INSIDE
 DRILL 3/8 DIA. OUTSIDE

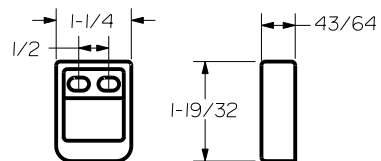


DOOR SKIN PLUS REINFORCEMENT - 5/32 MAX

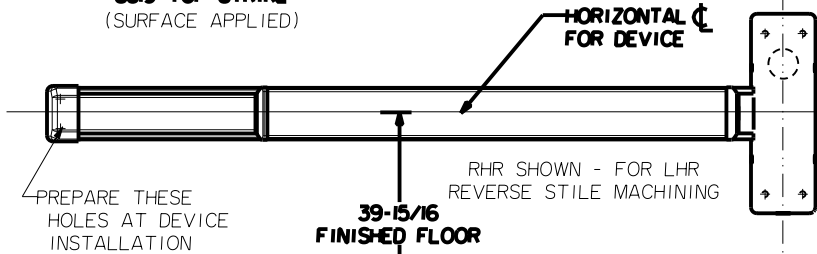


NOTCH THRU INSIDE FACE 1-5/8 DEEP

2-3/4 BACKSET OR CENTERED ON EXPOSED LOCKSTILE

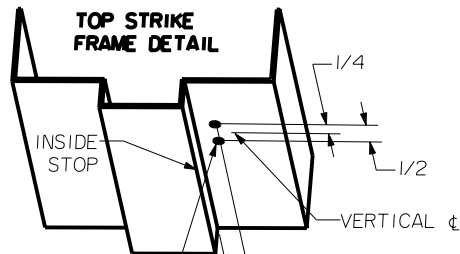
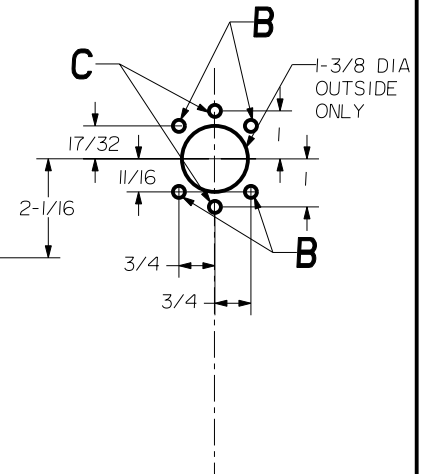
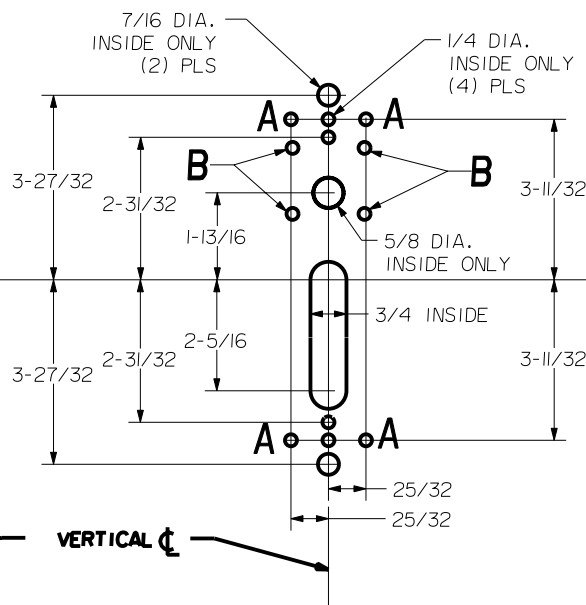


S519 TOP STRIKE
 (SURFACE APPLIED)

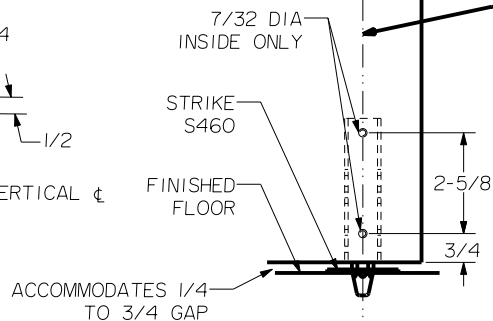


DEVICE SIDE MACHINING

TRIM SIDE MACHINING



DRILL AND TAP FOR #10-24 SCREWS



ACCOMMODATES 1/4 TO 3/4 GAP

LBR DEVICES:
 OMIT BOTTOM BOLT MACHINING.
 FIRE BOLT REQ'D FOR FL DEVICES
 SEE DRAWING 0297-II-000 FOR DETAILS

HOLE (4) PLS A	DEVICES	TRIMS	HOLE B	HOLE C
#10-24 TAP INSIDE ONLY	2803.FL2803	CO3	1/4 DIA THRU DOOR	1/4 DIA OUTSIDE ONLY

Precision Hardware a Division of Stanley Security Solutions, Inc. www.stanleysecuritysolutions.com			
DEVICE SERIES		TRIM SERIES	
2800, FL2800, 2800LBR, FL2800LBR		CO3	
STRIKE NO.	RELEASED DATE	TEMPLATE NO.	REV
S519, S460	5/01/05	HM-2800C	D