



## How to order - New Rim Exit Device with Visual Lock/Unlock & Directional Indicators

Product Series	Device Type	Intruder Function		Lever Trim & Function	Hand	Finish	Door Size
3R0	21	10VI	X	V4908A	RHRB	630	3'0"x8'0"x1-3/4"
3R0-APEX 2000	21 - Rim, Wide Stile	10VI - Outside Trim Lock/Unlock Capability with Directional and Lock/Unlock Indicator  10 - Outside Trim Lock/Unlock Capability with Directional Indicator		V4908A 4908A	RHRB LHRB	605 - Bright Brass 606 - Satin Brass 612 - Satin Bronze 613 - Oil-Rubbed Bronze 622 - Powder Coat Black 625 - Bright Chrome 626W - Weatherized Satin Chrome 628 - Satin Aluminum 630 - Satin Stainless Steel 630AM - Satin Stainless Steel w/ Anti-Microbial Coating 690 - Powder Coat Dark Bronze	Designate Door Size
Available with standard thumbturn (Part: 1EA6A2) or ADA compliant thumbturn (Part: 1EA6A1)							

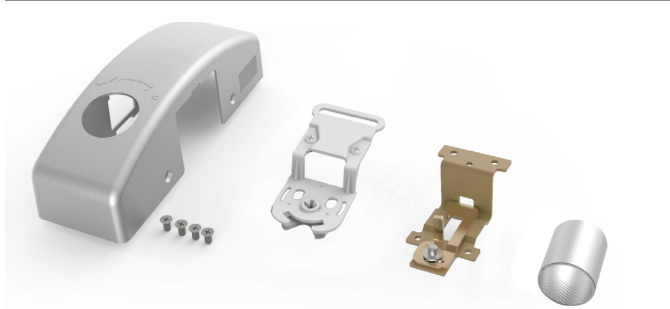
### Precision 2110VI Function incorporates outside trim lock/unlock capability with directional and lock/unlock indicator

Precision 2110VI		
Nomenclature	Finish	List price
2110VI x 4908A or 2110VI x V4908A 	628	\$2,578.00
	606, 612, 613, 622, 630, 690	\$2,804.00
	626W	\$2,990.00
	605, 625	\$3,115.00

### Precision 2110 Function incorporates outside trim lock/unlock capability with directional indicator

Precision 2110		
Nomenclature	Finish	List price
2110 x 4908A or 2110 x V4908A 	628	\$2,318.00
	606, 612, 613, 622, 630, 690	\$2,544.00
	626W	\$2,730.00
	605, 625	\$2,855.00

## How to Order - Retrofit Conversion Kits



### 2110 Conversion Kit

Kit Nomenclature

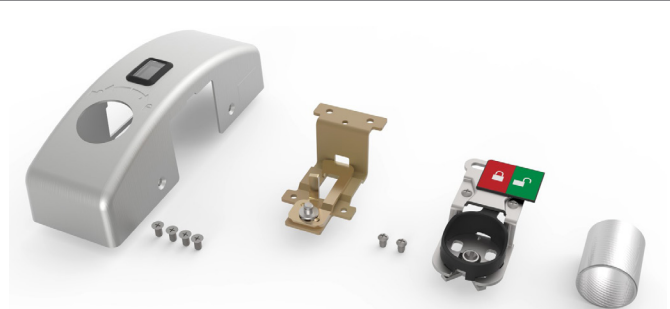
**RDC-10:** Converts from 2108 to 2110 without lock/unlock indicator

Parts included:

- Cover without lock/unlock window
- Cylinder mounting bracket
- Locking arm assembly
- Cylinder sleeve

Nomenclature	Finish	List price
RDC-10	628	\$466.00
	606, 612, 613, 622, 630, 690	\$519.00
	626W	\$600.00
	605, 625	\$600.00

**NOTE:** When Ordering Retrofit Kits, specify handing (RHRB/LHRB), finish rated or non-fire rated. Rim Cylinder or Thumb Turn sold separately



### New 2110VI Conversion Kit

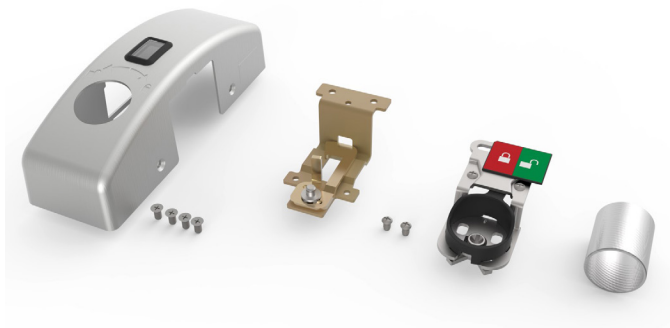
Kit Nomenclature

**RDC-10VI:** Converts from 2108 or 2110 to 2110VI with lock/unlock indicator

Parts included:

- Cover with lock/unlock window
- Cylinder mounting bracket with flag assembly
- Locking arm assembly
- Cylinder sleeve

Nomenclature	Finish	List price
RDC-10VI	628	\$726.00
	606, 612, 613, 622, 630, 690	\$779.00
	626W	\$860.00
	605, 625	\$860.00



### New FL-2110VI Conversion Kit

Kit Nomenclature

**FRDC-10VI:** Converts from FL2108 or FL2110 to FL2110VI with lock/unlock indicator

Parts included:

- Cover with lock/unlock window
- Cylinder mounting bracket with flag assembly
- Locking arm assembly
- Cylinder sleeve

Nomenclature	Finish	List price
FRDC-10VI	628	\$906.00
	606, 612, 613, 622, 630, 690	\$959.00
	626W	\$1,040.00
	605, 625	\$1,040.00